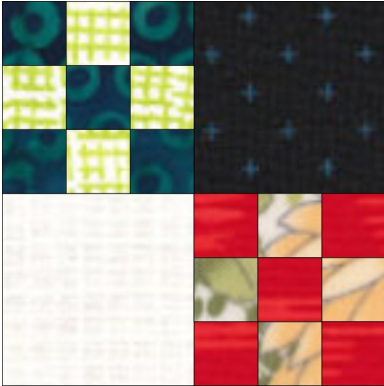




February 2019 – Alternating 9-Patch



I think this six inch (finished size) Alternating 9-Patch block could be a great building block for an interesting scrappy quilt.

It's simple to make and even easier if you happen to have a collection of 3-inch (finished size) 9-patch blocks.

The challenge (and FUN!) in this block is placing light and dark fabrics together in interesting combinations to create a great scrappy quilt. Do have fun digging in your scraps to make them. When you post, please use the tag **Alt-9P**.

FABRIC GUIDELINES

This block is made from scrappy 9-patch units combined with light and very dark squares in colors of your choice.

9-Patches – The 9-patch units are of the variety with darker fabrics in the corners (and center) and lighter fabrics on the sides. For these, “lighter” and “darker” mean only in relation to one another. They can be made of fabrics of any color/pattern of your choosing.

Light – Pale fabric(s) of your choice. These could be solids or prints. They should “read” as lights or low volume.

Very Dark – A solid or tone-on-tone (TOT) print that can be any color or black and is VERY dark. If it's not black, from across the room it should read as almost black. Think midnight blue, deep burgundy or purple, dark forest greens.

MULTIPLE BLOCKS

You may make up to 9 blocks to enter in the Block Lotto drawing. If you make multiple blocks, you may use the same fabrics in multiple blocks as long as each block has a unique arrangement of fabrics—no twins! You may use matching or different 9-patch units in each block.

CUTTING FABRIC

For each **9-Patch unit** (make 2)

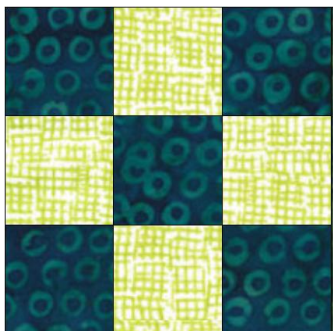
- Four 1 ½ inch squares from “lighter” fabric
- Five 1 ½ inch squares from “darker” fabric

For **Alternate square units**

- 3 ½ inch square from **Light**
- 3 ½ inch square from **Very Dark**

SEWING THE BLOCK

Make the 9-Patch Units



Make two of these for each block

1. Lay out the 9 small squares to form the 9-patch as shown
2. Sew the squares in each row together. Press seams toward the dark squares
3. Sew the rows together. Press the seams open or toward top/bottom rows.

Measurement check:

You should have a sewn unit that measures 3 ½ inches square

Assemble the Block

1. Layout the block as a 4-patch, with 9-Patch units in opposite corners and plain fabrics (Light and Very Dark) in the other corners.
2. Sew each 9-patch unit to a plain square, press toward the plain fabric square
3. Sew the pairs together and press. You're done!

Measurement check:

Your block should measure 6½ inches (for a finished size of 6 inches when sewn into a quilt by one of the winners).

QUILT IDEA

This quilt is made from 48 of these Alt-9P blocks and 48 six-inch 4-patches and a 3 inch border. It measures 54 x 78 inches.

Here are the details:

4-Patch blocks

Construct 4 patch blocks from 3 ½ inch squares.

For each block use 4 **LIGHT** fabric squares OR 4 **Very Dark** fabric squares.

You will need 24 Light blocks and 24 Very Dark blocks.

Borders

Borders are cut 3 ½ inches wide

Side borders are cut 72 ½ inches long

Top/Bottom borders are cut 54 ½ inches long

Attach the longer side borders first, then add top and bottom borders.

I thought this quilt design would be a great one for charity quilts and it would be fun to make with a group of friends as a quasi-mystery. Starting with assembled 9-patches and a bunch of cut squares, you could quickly sew them into this quilt ... or use them in your own design.

And for a really quick quilt, you could use 6 ½ inch squares to alternate with the Alternating 9-Patch blocks instead of making the 4-patches.

